

10th Green Building Convention
GBCSA

10 Axioms for saving water

PRIVATE PROPERTY

Right of Admission Reserved

BY APPOINTMENT ONLY

No Hawkers

No Vacancies

No Politicians



**1. You
don't know
what you
don't know**



Navigate



chart ▾ data ▾ help

channels tree

grid

find

show all

▼ Western Cape



- ▶ ☐ Check meter 2
- ▶ ☐ Check Meters_Total
- ▶ ☐ Derived difference
- ▼ ☒
 - ☒ Consumption
 - ☒ Flow

Main



start date 2017-07-21 00:00

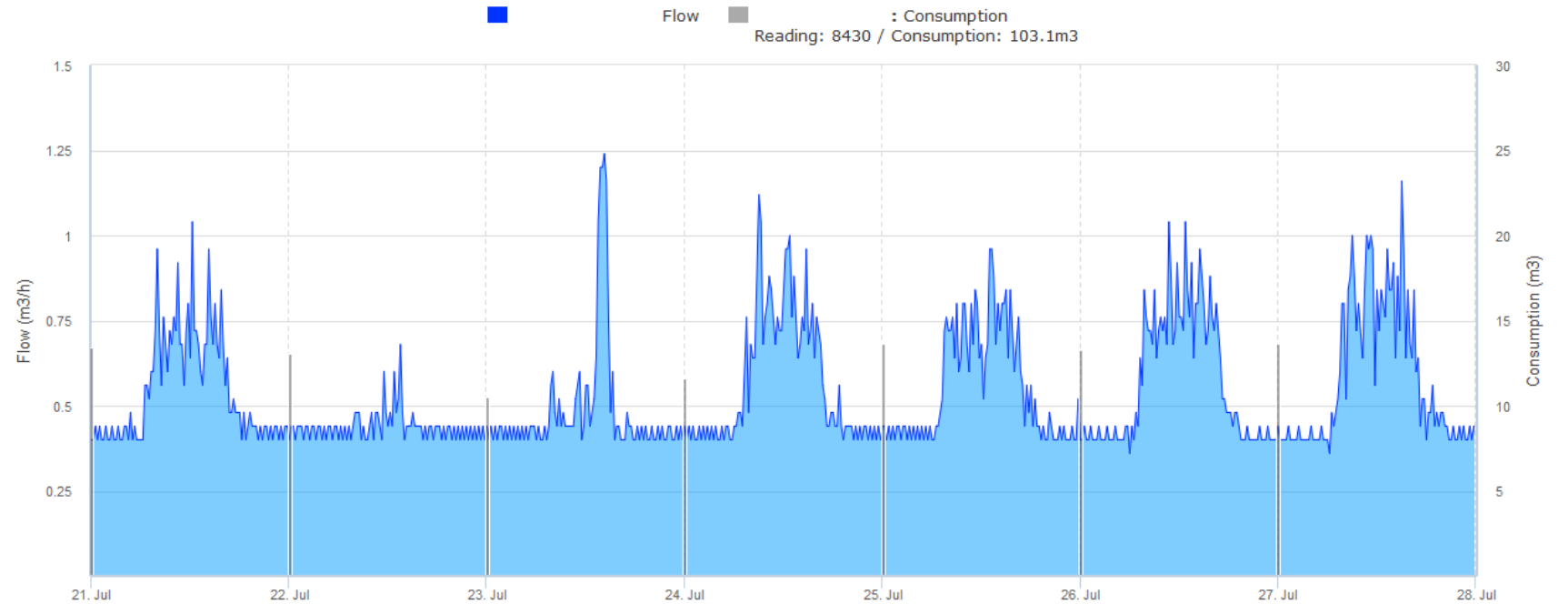
end date 2017-07-28 00:00

range week ▾

advanced ▾

apply selection

reset



Raw values, between 2017-07-21 00:00 and 2017-07-28 00:00

Generated on 2017-10-09 @ 10:24 by ZEDNET, Copyright

	Name	Latest import	Value	Meter reading	Min	Max	Sum	Avg
+	Consumption	2017-07-28 00:00:00	13.93 m3	8430.4	10.52 m3	13.93 m3	103.1 m3	12.888 m3/day
-	Flow	2017-07-28 00:00:00	0.400 m3/h		0.360 m3/h	1.240 m3/h		0.533 m3/h
Site: Estuaries Main		Reference: 9602006576385						
Data type: Flow		Unit: m3/h		MNF/Avg: 67.54%				
Notes:								



Navigate

chart data help

channels tree

grid

find

show all

Western Cape

- ☐ Check meter 2
- ☐ Check Meters_Total
- ☐ Derived difference
- ☒ Consumption
- ☒ Flow

Main

start date 2017-07-28 00:00

end date 2017-08-04 00:00

range week

advanced

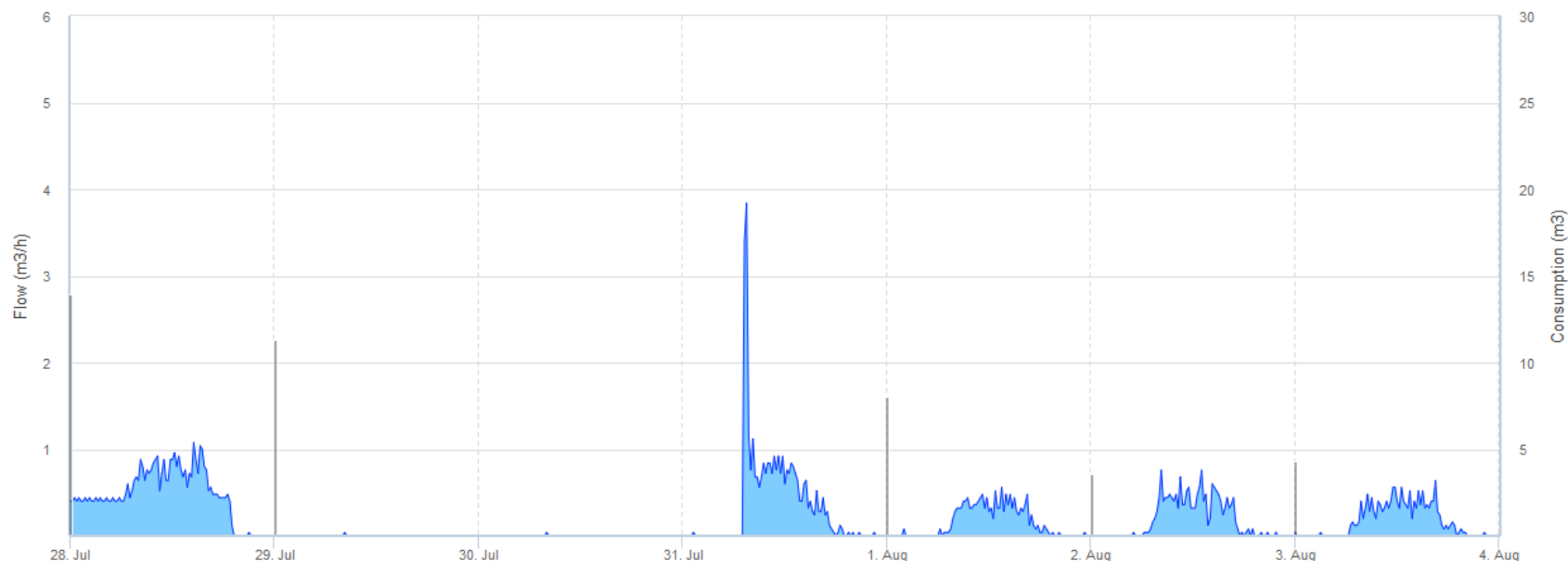
apply selection

reset

: Flow



: Consumption

Reading: 8461 / Consumption: 45.23m3



Raw values, between 2017-07-28 00:00 and 2017-08-04 00:00

Generated on 2017-10-09 @ 10:24 by ZEDNET, Copyright

	Name	Latest import	Value	Meter reading	Min	Max	Sum	Avg
+	Consumption	2017-08-04 00:00:00	4.03 m3	8461.7	0.01 m3	13.93 m3	45.23 m3	5.654 m3/day
-	Flow	2017-08-04 00:00:00	0.000 m3/h		0.000 m3/h	3.840 m3/h		0.187 m3/h
Site: Estuaries Main		Reference: 9602006576385						
Data type: Flow		Unit: m3/h		MNF/Avg: 0.00%		 		
Notes:								

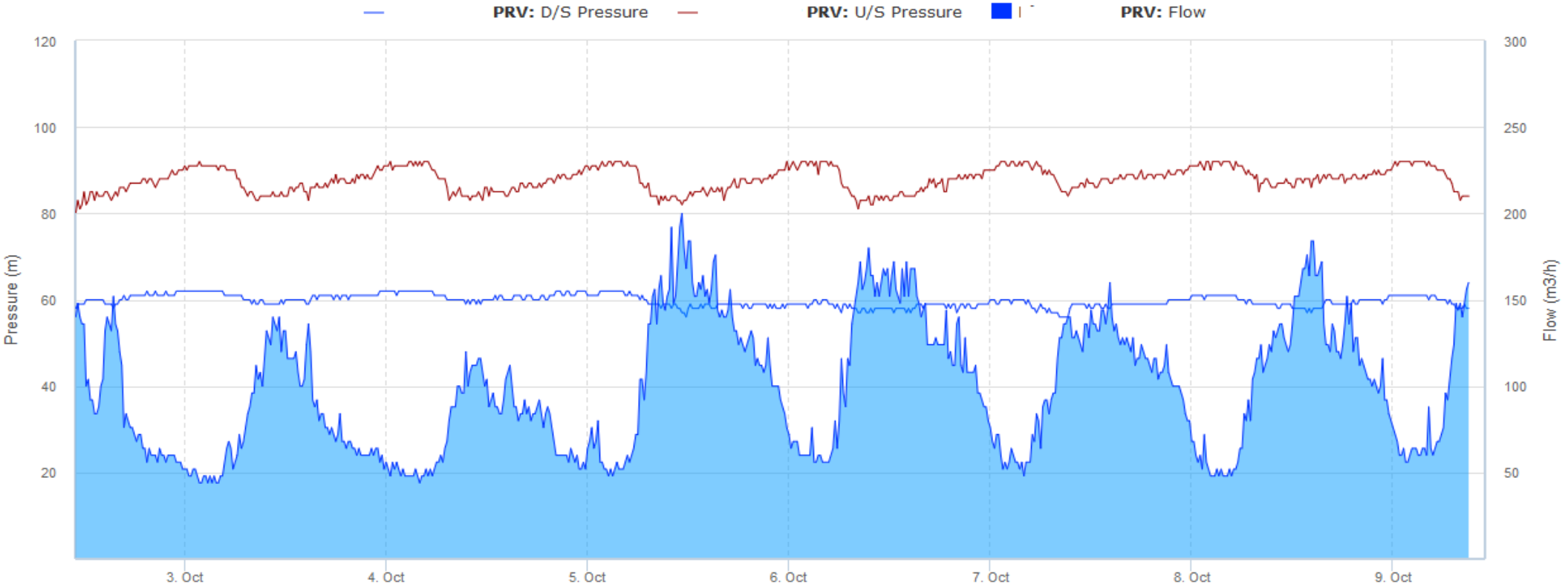




2. Don't let pressure get the better of you

start date2017-10-02 10:57end date2017-10-09 10:57range weekadvanced

apply selectionreset



Raw values, between 2017-10-02 10:57 and 2017-10-09 10:57

Generated on 2017-10-09 @ 10:57 by ZEDNET, Copyright

	Name	Latest import	Value	Meter reading	Min	Max	Sum	Avg
+	D/S Pressure	2017-10-09 09:00:00	58.000 m		56.000 m	62.000 m		59.728 m
+	U/S Pressure	2017-10-09 09:00:00	84.000 m		80.000 m	92.000 m		87.836 m
+	Flow	2017-10-09 09:00:00	160.000 m3/h		44.000 m3/h	200.000 m3/h		98.37 m3/h

3. Have a broken window policy



**4. Don't
leave the
lights on**



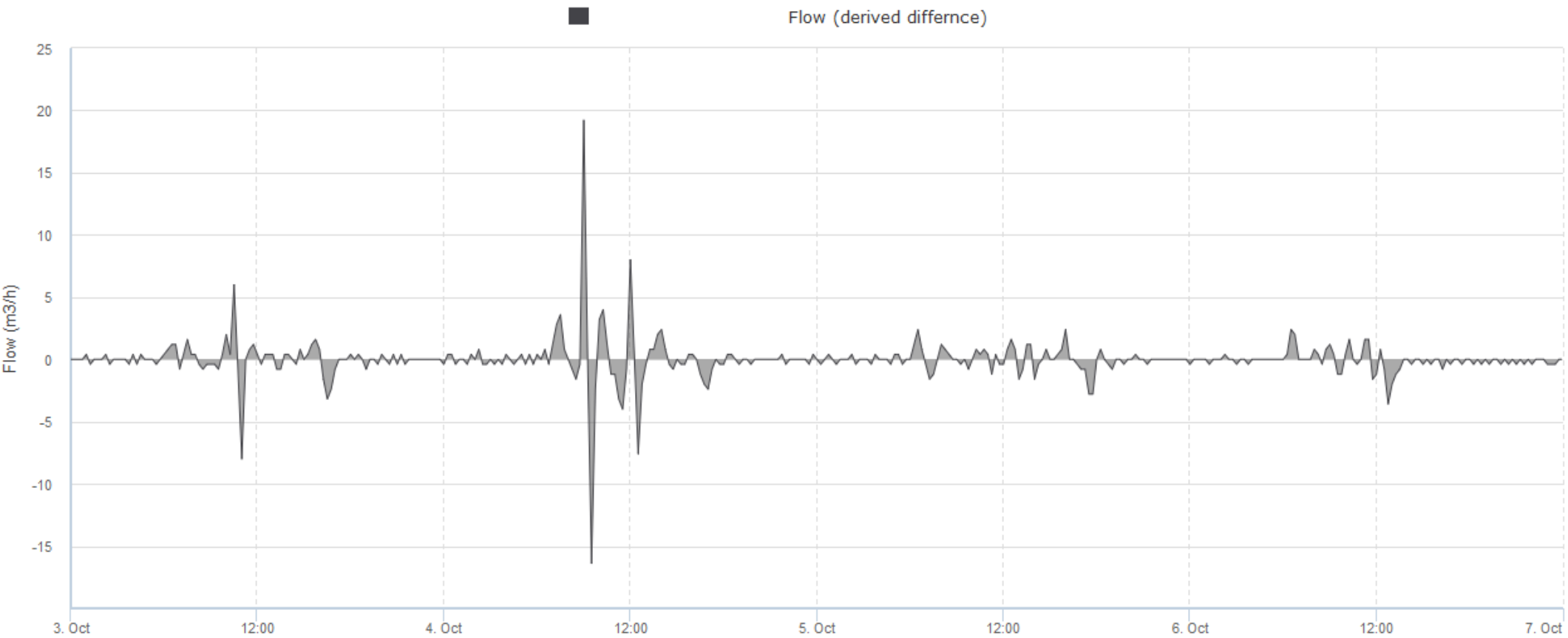
5. It's a balancing act





start date2017-10-03 00:00end date2017-10-07 00:00rangecustomadvanced

apply selectionreset



Raw values, between 2017-10-03 00:00 and 2017-10-07 00:00

Generated on 2017-10-09 @ 10:35 by ZEDNET, Copyright

	Name	Latest import	Value	Meter reading	Min	Max	Sum	Avg
+	Flow (derived difference)	2017-10-07 00:00:00	0 m3/h		-16.4 m3/h	19.2 m3/h		-0.019 m3/h

start date

2017-10-03 00:00

end date

2017-10-07 00:00

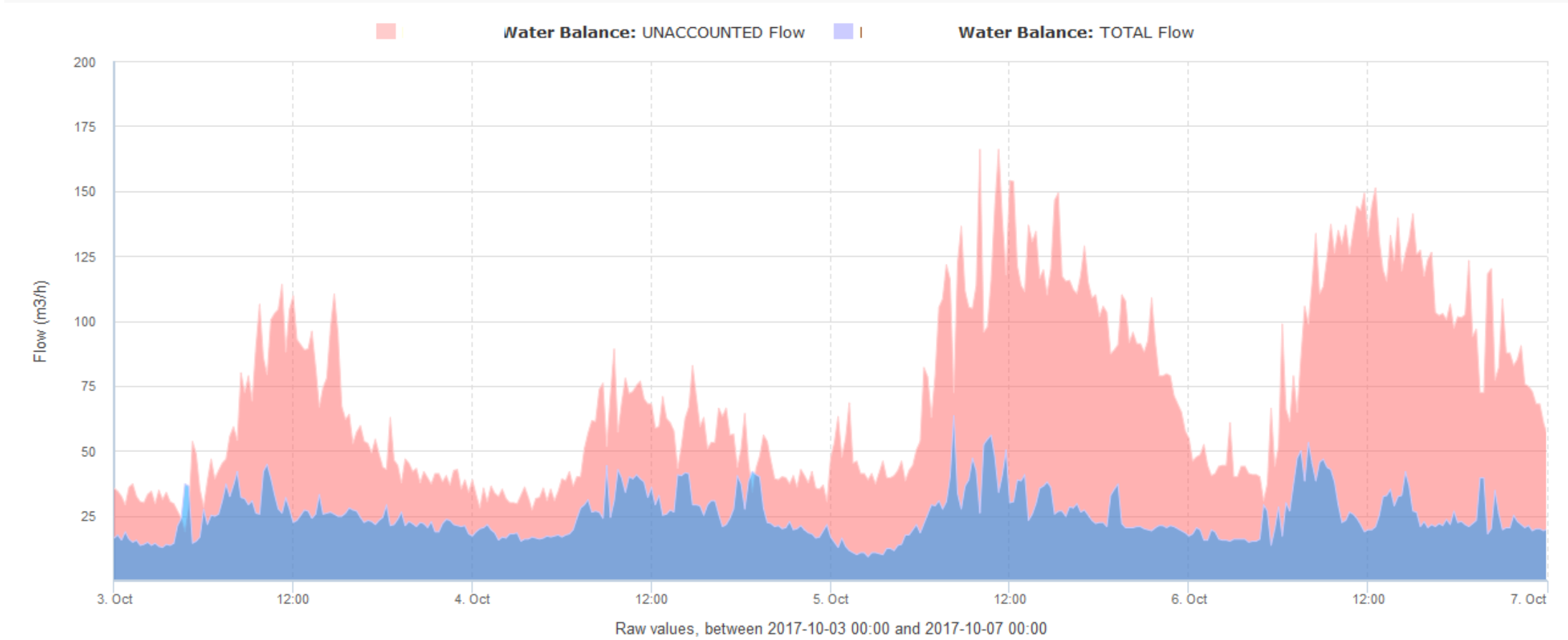
range

custom

advanced

apply selection

reset

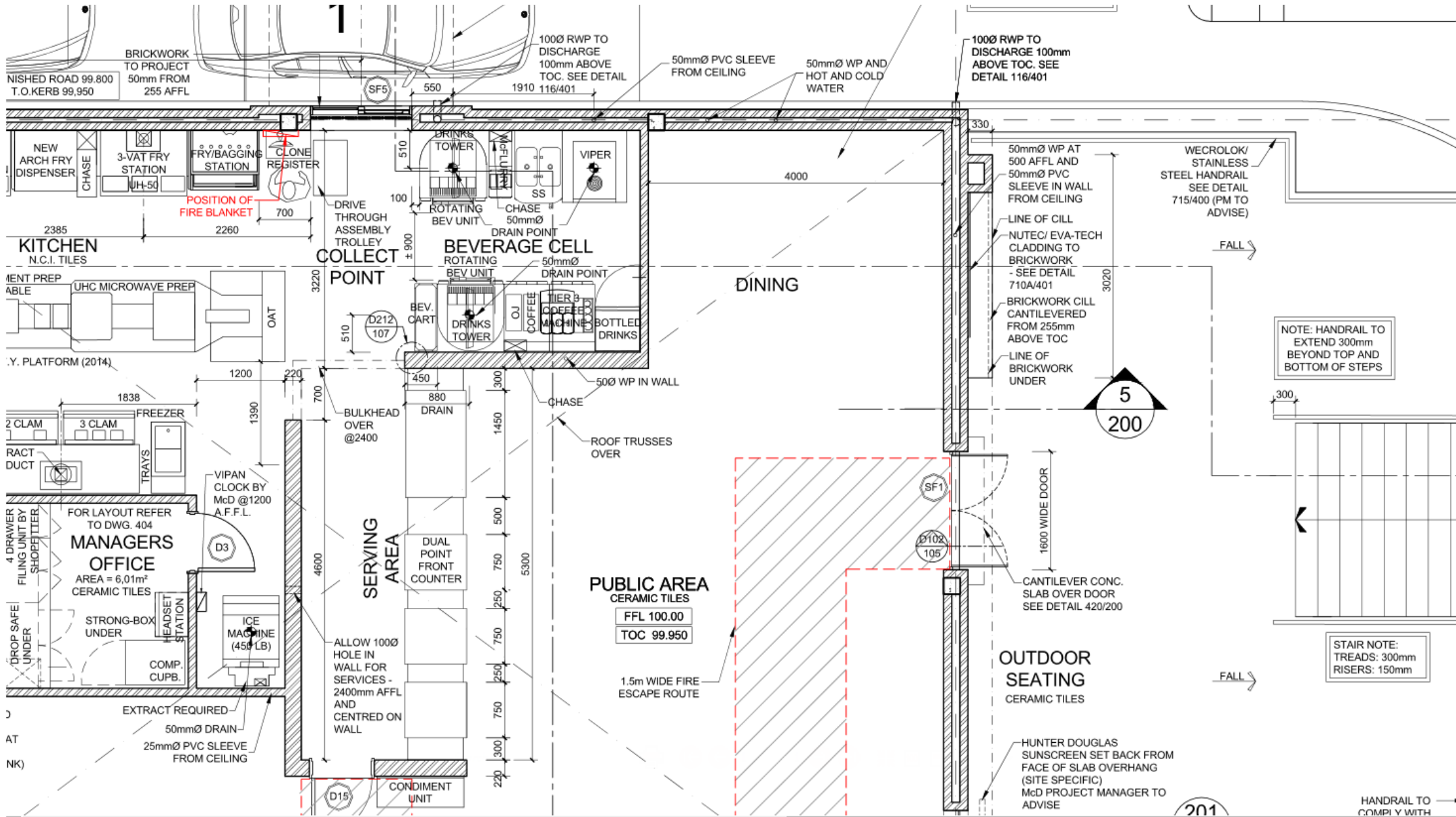


Generated on 2017-10-09 @ 10:35 by ZEDNET, Copyright

	Name	Latest import	Value	Meter reading	Min	Max	Sum	Avg
+	UNACCOUNTED Flow	2017-10-07 00:00:00	56 m3/h		18.8 m3/h	166 m3/h		71.932 m3/h
+	TOTAL Flow	2017-10-07 00:00:00	20 m3/h		9.2 m3/h	63.6 m3/h		25.242 m3/h

6. It's all about the plan





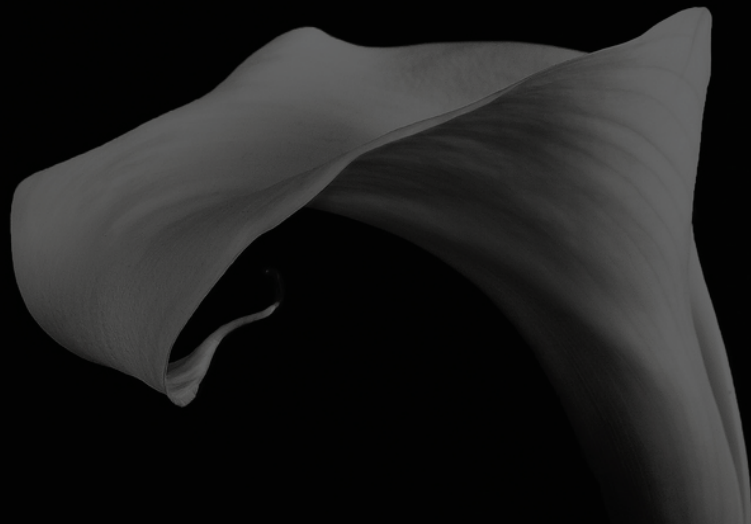
7. Communication is key



8. Nature knows best



Arumloo
- WHEN NATURE CALLS -



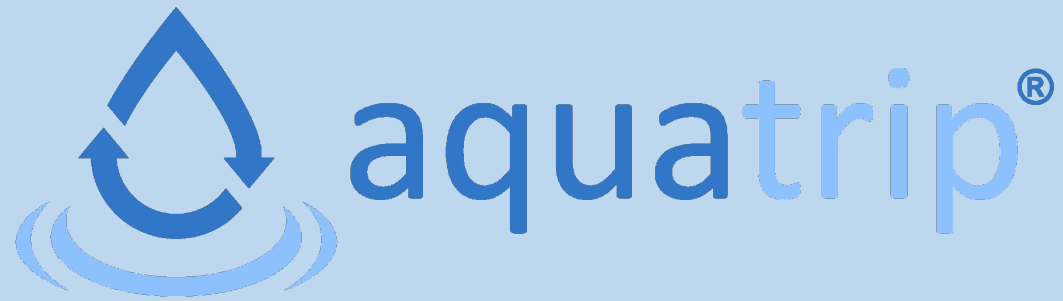
The Arumloo is a beautiful, innovative toilet capable of flushing on less than two litres of water. Inspired by the elegant form of the Arum Lily, the patented design of the Arumloo defines a new standard of toilet efficiency.

9. Recycle



10. It's up to us





Thank you